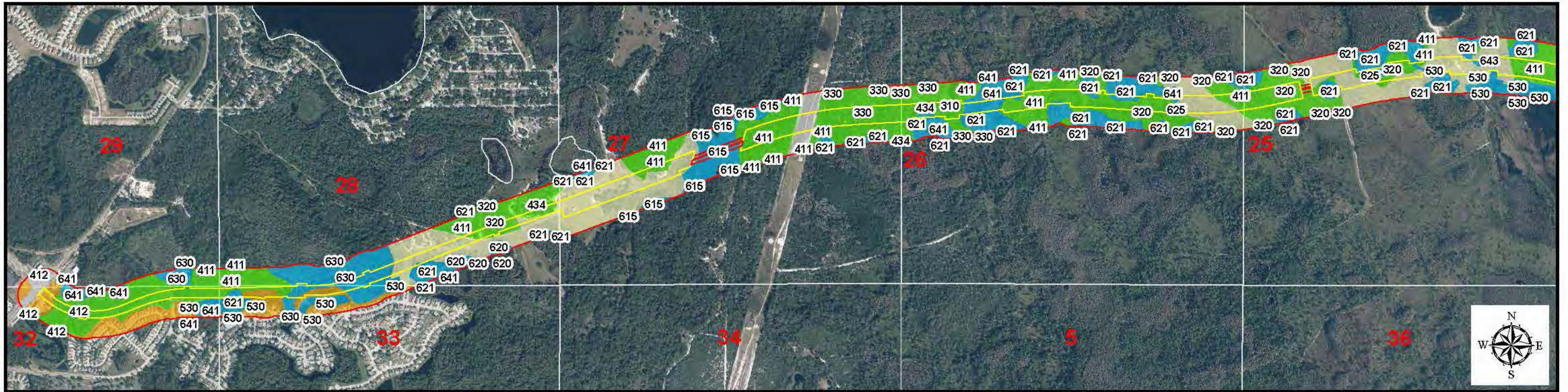
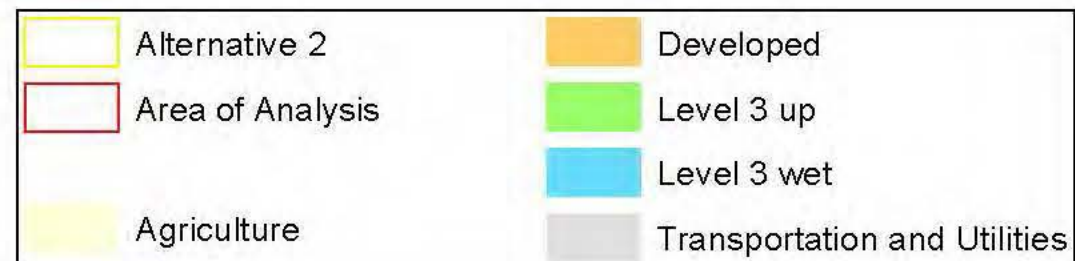


Map Set I-1

Alternatives 2-17 FLUCFCS Maps Showing Habitats



Alternative 2. FLUCFCS Map Showing Habitats Along the Alternative



0 750 1,500 3,000 Feet

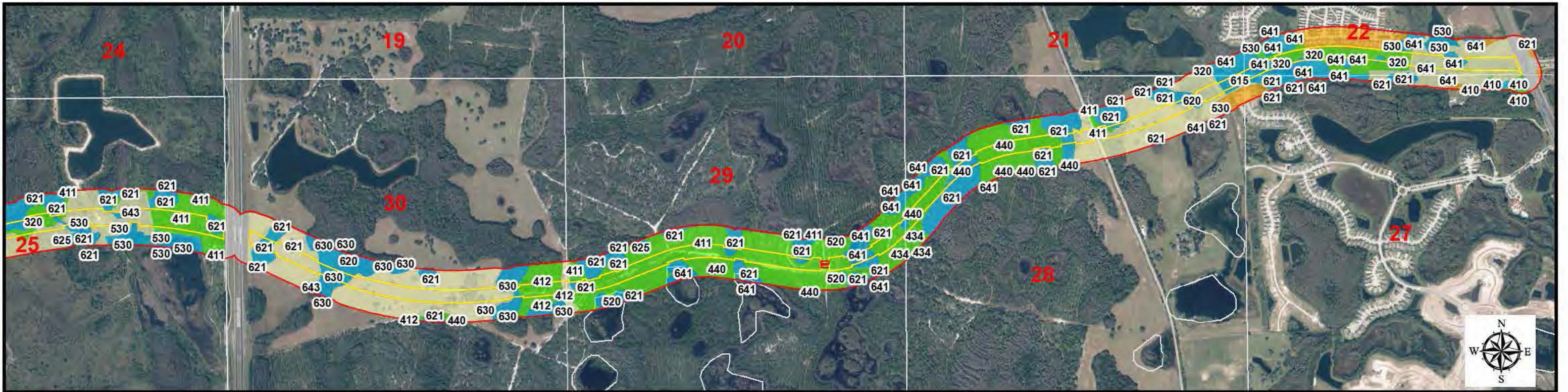
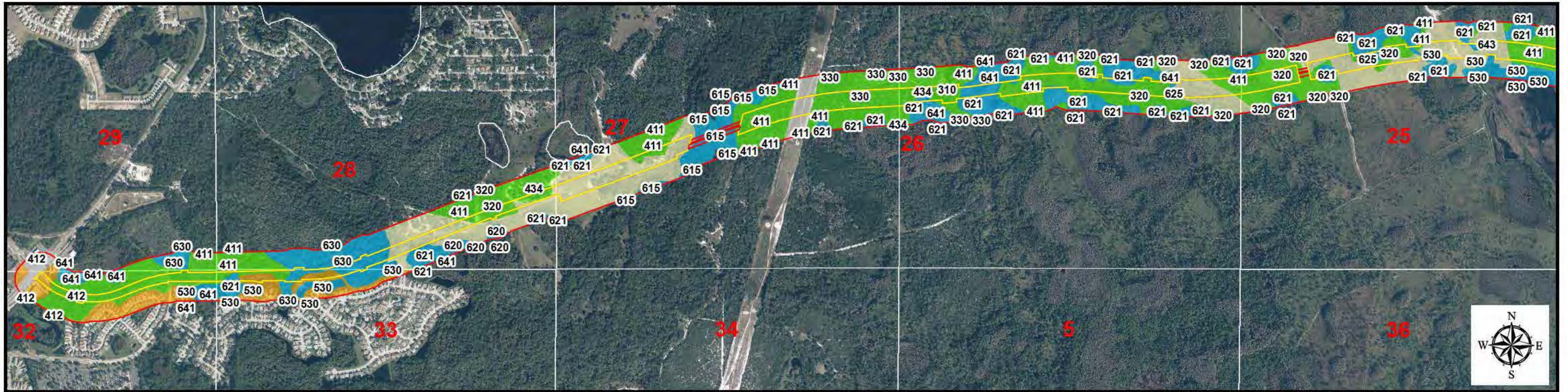
Pasco County Florida





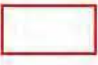



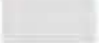
**Ridge Road Extension
Alternatives Analysis**

Drawn Dec. 2014

Project Number: 5504405 P OF Document: Alt_ID_wetland_1_20141124.pdf



Alternative 3. FLUCFCS Map Showing Habitats Along the Alternative

	Alternative 3		Developed
	Area of Analysis		Level 3 up
	Agriculture		Level 3 wet
			Transportation and Utilities

0 750 1,500 3,000 Feet

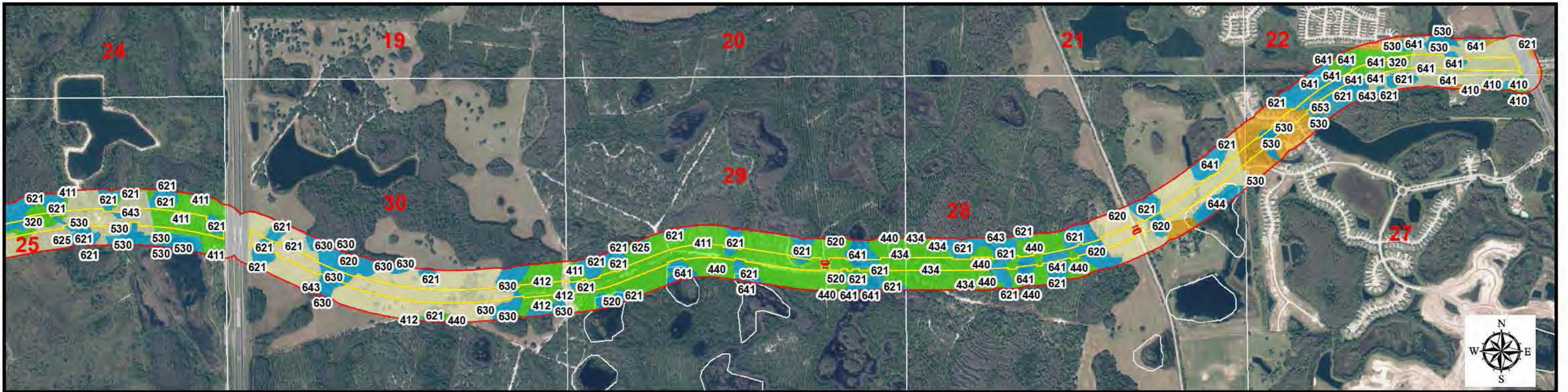
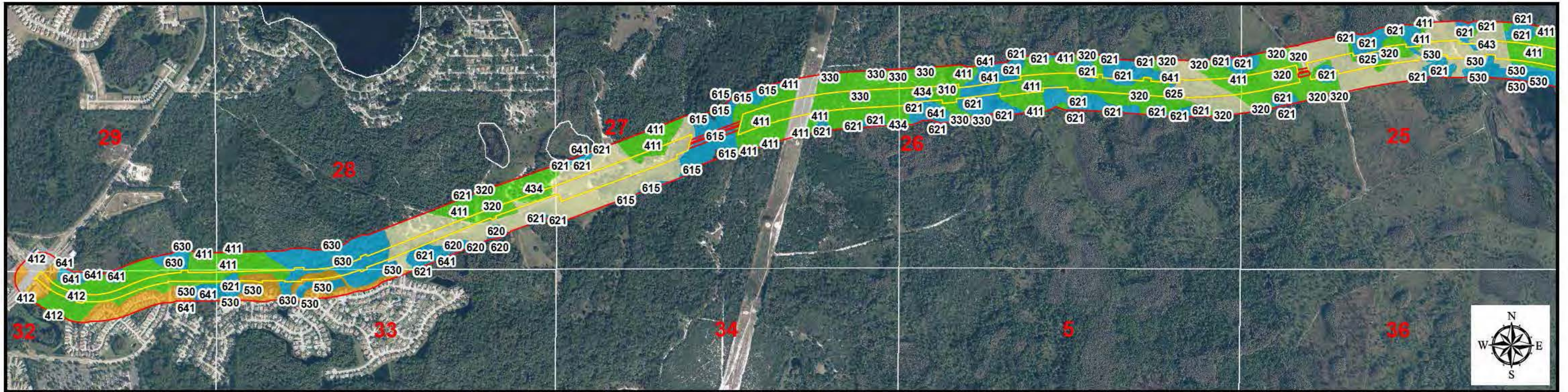
Pasco County Florida



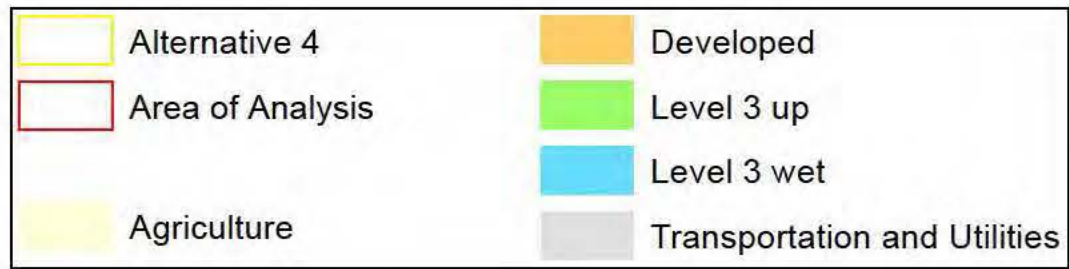
**Ridge Road Extension
Alternatives Analysis**

Drawn Dec. 2014

Project Number 5504-005 PDF Document Alt_10_wetlands_1_20141124.pdf



Alternative 4. FLUCFCS Map Showing Habitats Along the Alternative



0 750 1,500 3,000 Feet

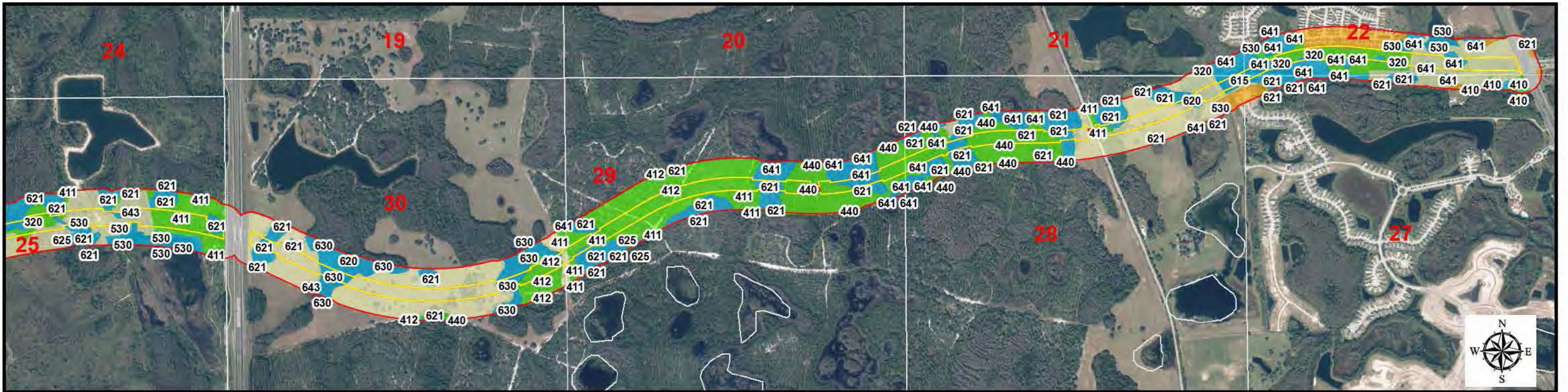
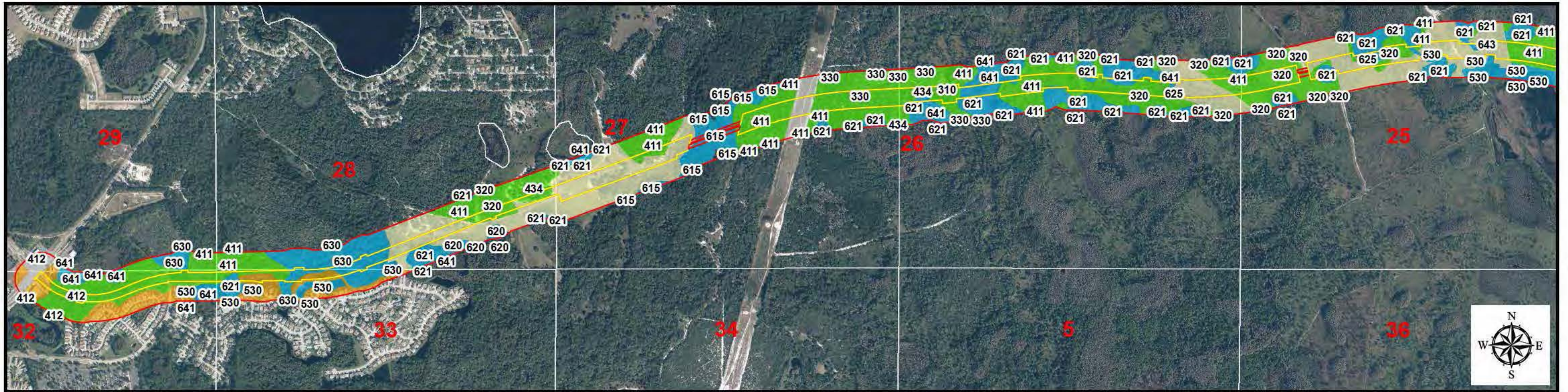
Pasco County Florida









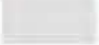
**Ridge Road Extension
Alternatives Analysis**

Drawn Dec. 2014

Project Number 5504-005 PDF Document Alt_10_wetlands_1_20141124.pdf



Alternative 5. FLUCFCS Map Showing Habitats Along the Alternative

- | | |
|--|--|
|  Alternative 5 |  Developed |
|  Area of Analysis |  Level 3 up |
|  Agriculture |  Level 3 wet |
| |  Transportation and Utilities |

0 750 1,500 3,000 Feet

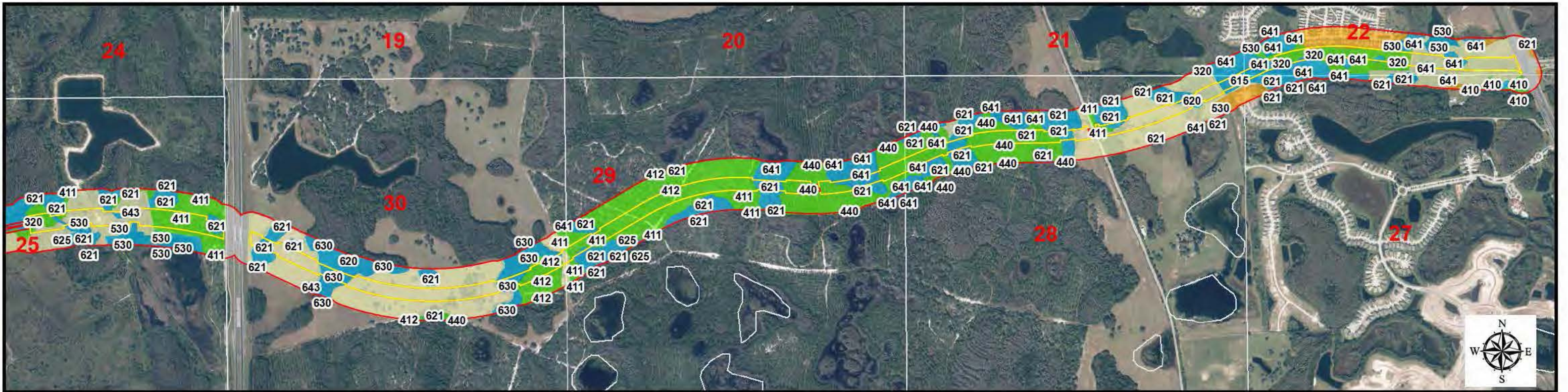
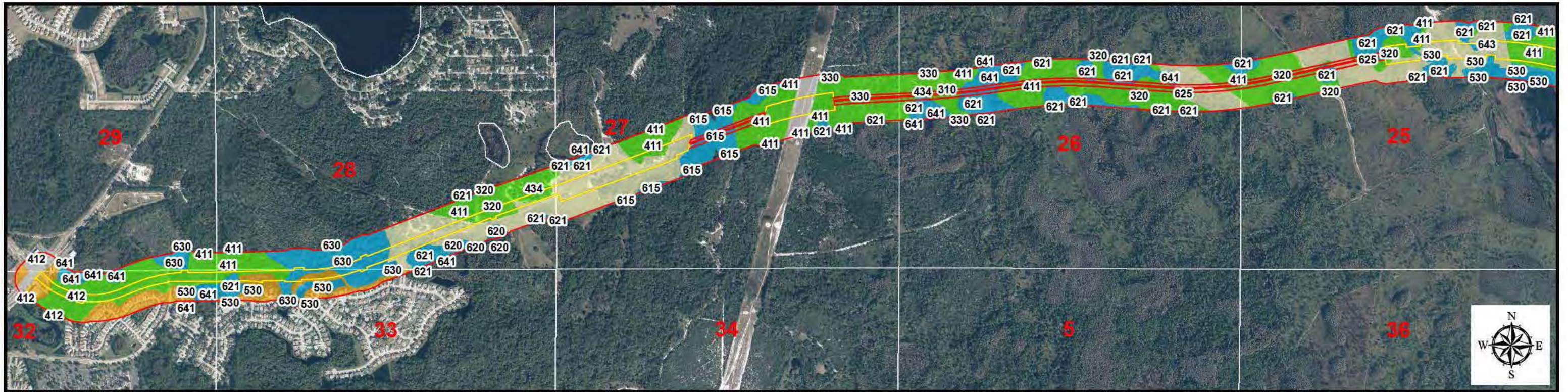
Pasco County Florida




**Ridge Road Extension
Alternatives Analysis**

Drawn Dec. 2014

Project Number 5504-005 PDF Document Alt_10_wetlands_1_20141124.pdf



Alternative 6. FLUCFCS Map Showing Habitats Along the Alternative

- | | |
|--|--|
|  Alternative 6 |  Developed |
|  Area of Analysis |  Level 3 up |
|  Agriculture |  Level 3 wet |
| |  Transportation and Utilities |

0 750 1,500 3,000 Feet

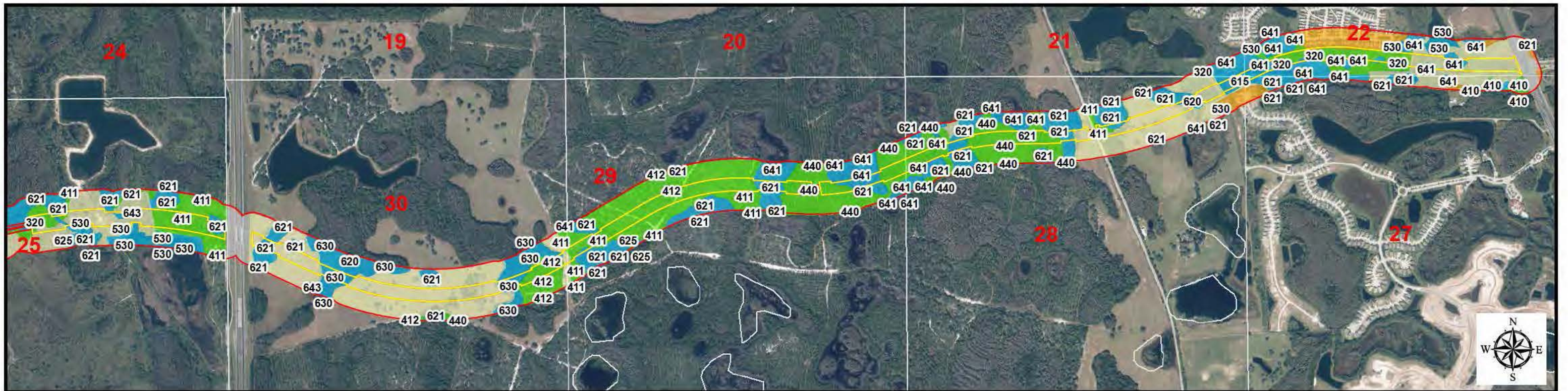
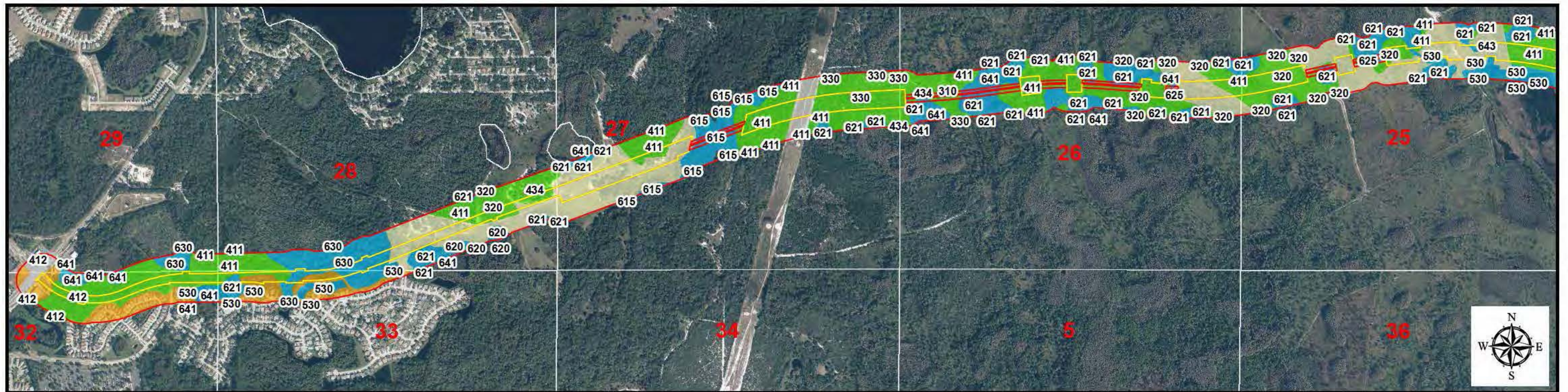
Pasco County Florida









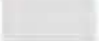
Ridge Road Extension Alternatives Analysis

Drawn Dec. 2014

Project Number 5504-005 PDF Document Alt_10_wetlands_1_20141124.pdf



Alternative 7. FLUCFCS Map Showing Habitats Along the Alternative

- | | | | |
|---|------------------|---|------------------------------|
|  | Alternative 7 |  | Developed |
|  | Area of Analysis |  | Level 3 up |
|  | Agriculture |  | Level 3 wet |
| | |  | Transportation and Utilities |

0 750 1,500 3,000 Feet

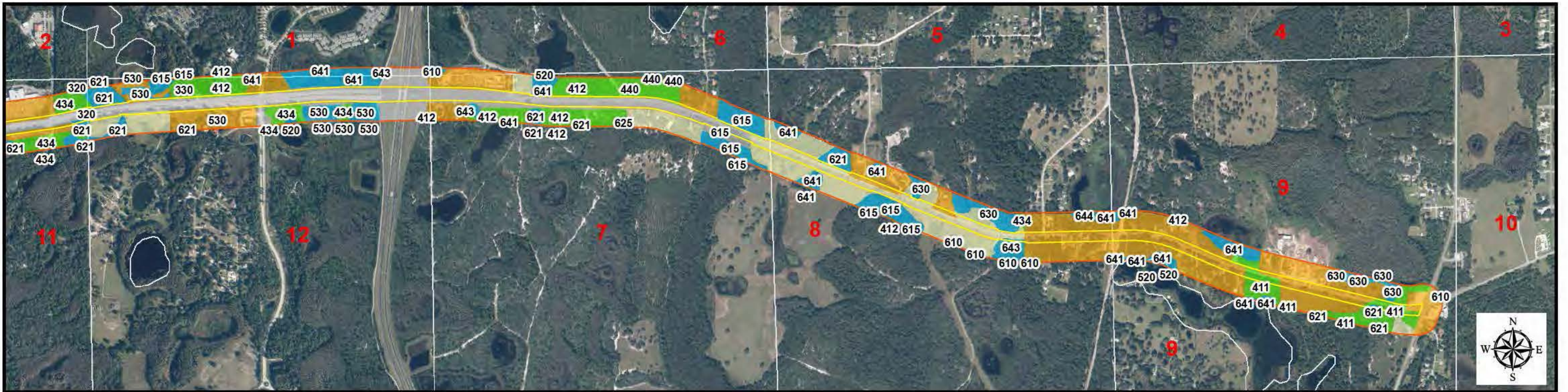
Pasco County Florida



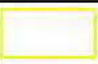





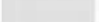
**Ridge Road Extension
Alternatives Analysis**

Drawn Dec. 2014

Project Number 5504-005 PDF Document Alt_10_wetlands_1_20141124.pdf



Alternative 8. FLUCFCS Map Showing Habitats Along the Alternative

	Alternative 8		Developed
	Area of Analysis		Level 3 up
	Agriculture		Level 3 wet
			Transportation and Utilities

0 750 1,500 3,000 Feet

Pasco County Florida



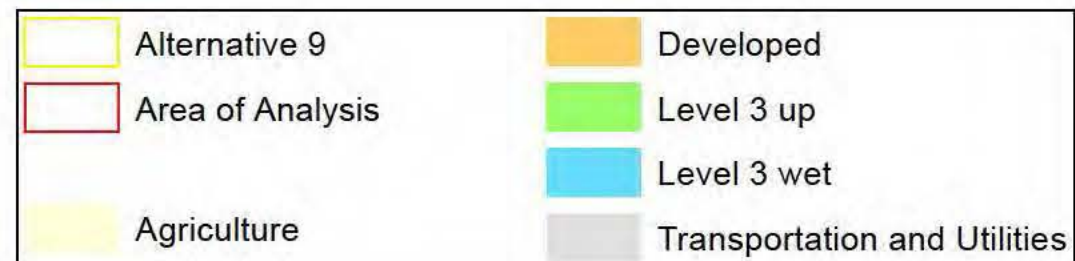
Ridge Road Extension Alternatives Analysis

Drawn Dec. 2014

Project Number 5504-005 PDF Document Alt_10_wetlands_1_20141124.pdf



Alternative 9. FLUCFCS Map Showing Habitats Along the Alternative



0 1,000 2,000 4,000 Feet

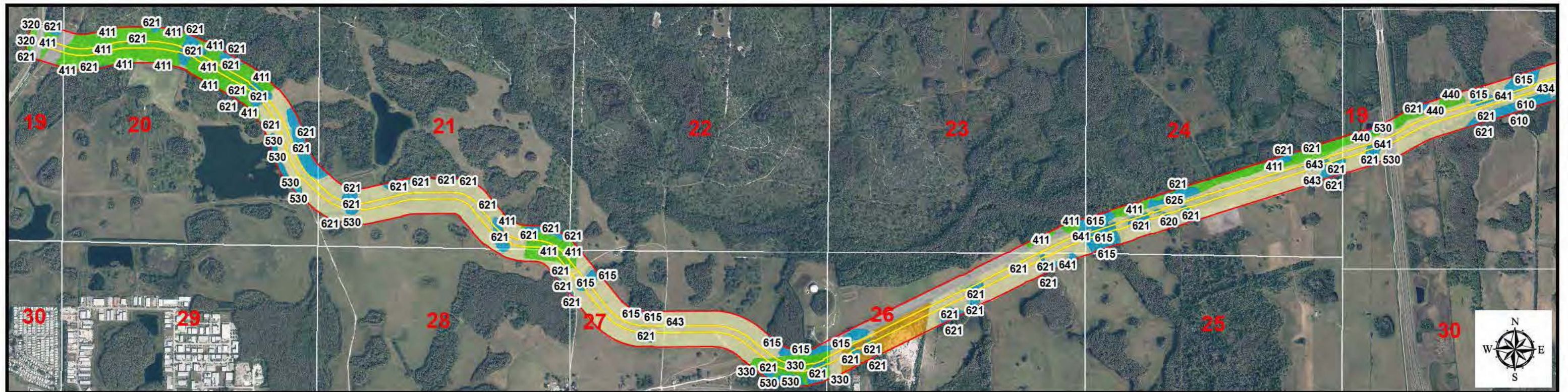
Pasco County Florida



**Ridge Road Extension
Alternatives Analysis**



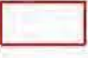



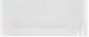
Drawn Dec. 2014

Project Number: SS04-005 PDF Document: Alt_10_wetlands_1_20141124.pdf



Alternative 10. FLUCFCS Map Showing Habitats Along the Alternative

0 1,000 2,000 4,000 Feet

 Alternative 10	 Developed
 Area of Analysis	 Level 3 up
 Agriculture	 Level 3 wet
	 Transportation and Utilities

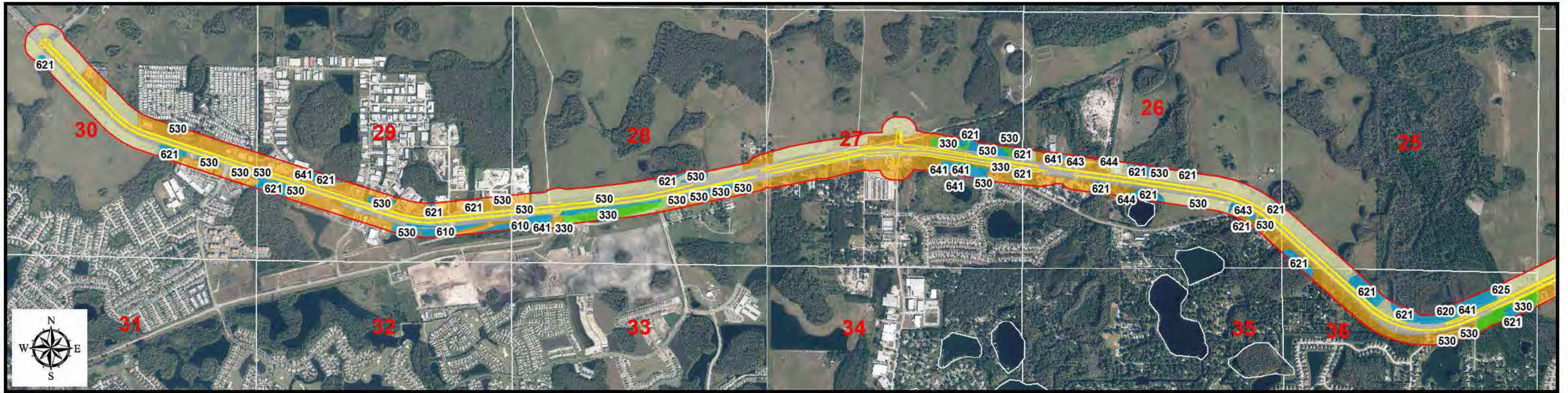
Pasco County Florida



Ridge Road Extension Alternatives Analysis

Drawn Nov. 2014

Project Number 5504-005 PDF Document Alt_10_wetlands_1_20141124.pdf



Alternative 11. FLUCFCS Map Showing Habitats Along the Alternative

	Alternative 11		Developed
	Area of Analysis		Level 3 up
	Agriculture		Level 3 wet
			Transportation and Utilities

0 1,000 2,000 4,000 Feet

Pasco County Florida



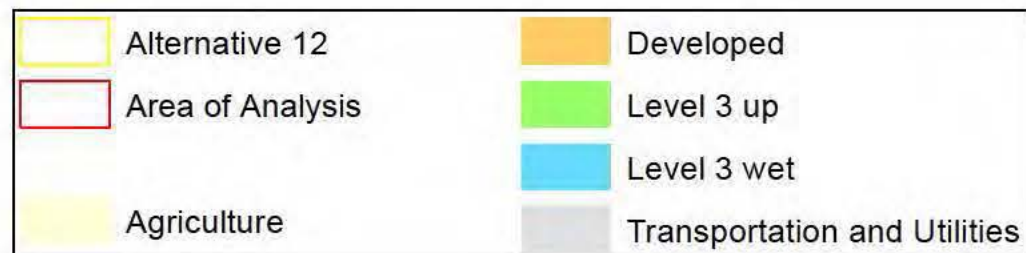
Ridge Road Extension Alternatives Analysis

Drawn Dec. 2014

Project Number 5504-005 PDF Document Alt_10_wetlands_1_20141124.pdf



Alternative 12. FLUCFCS Map Showing Habitats Along the Alternative



0 1,000 2,000 4,000 Feet

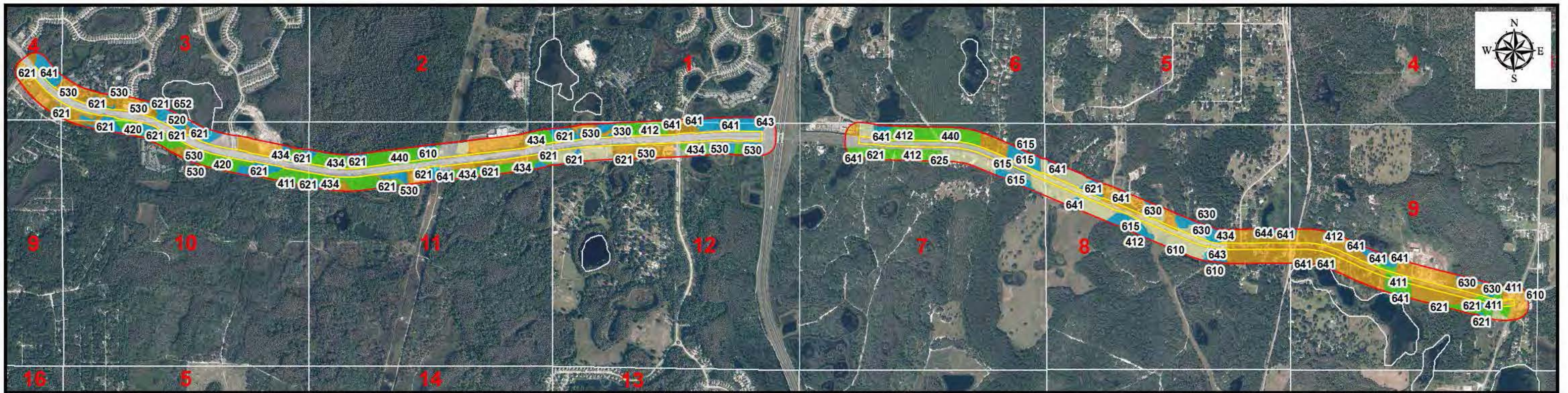
Pasco County Florida



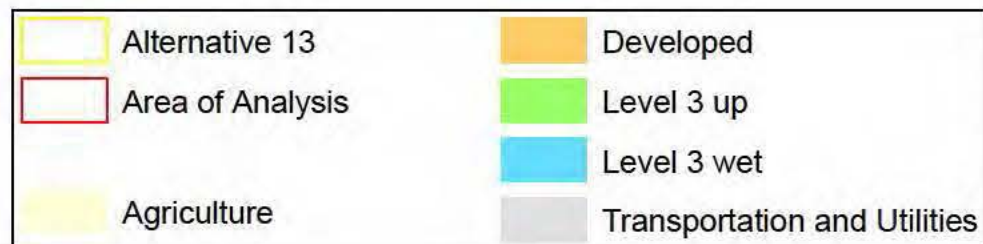
**Ridge Road Extension
Alternatives Analysis**

Drawn Dec. 2014

Project Number 5504-005 PDF Document Alt_10_wetlands_1_20141124.pdf



Alternative 13. FLUCFCS Map Showing Habitats Along the Alternative



0 1,000 2,000 4,000 Feet

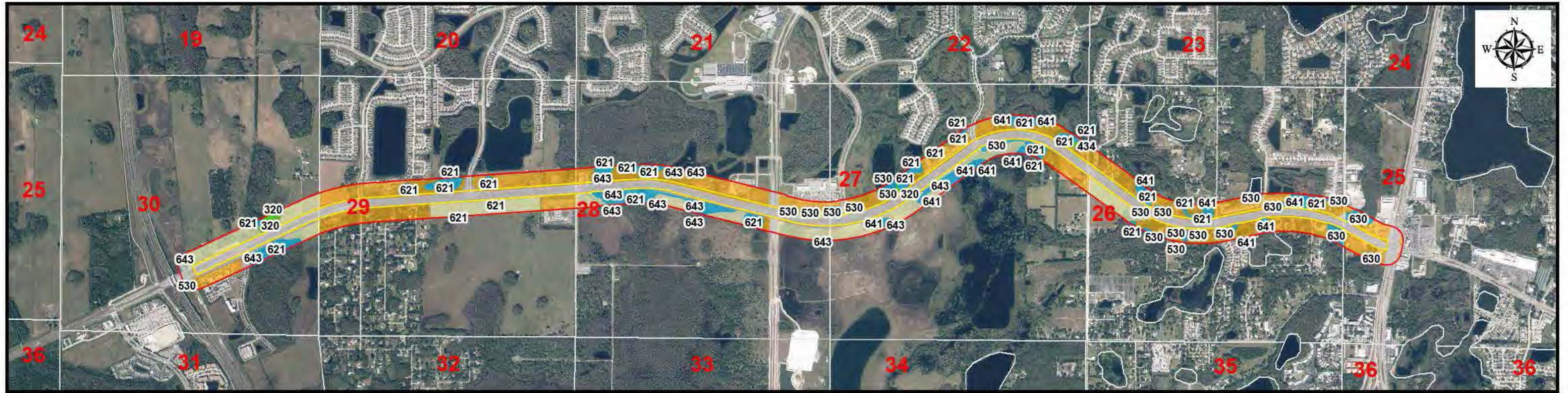
Pasco County Florida



Ridge Road Extension Alternatives Analysis

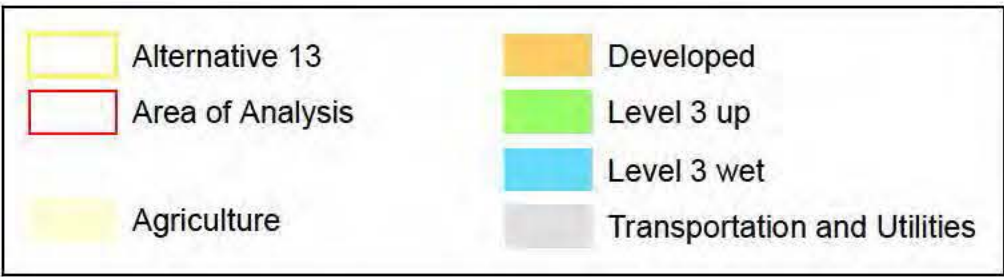
Drawn Dec. 2014

Project Number 5504-005 PDF Document Alt_10_wetlands_1_20141124.pdf



Alternative 13. FLUCFCS Map Showing Habitats Along the Alternative

0 1,000 2,000 4,000 Feet



Pasco County Florida



Ridge Road Extension Alternatives Analysis

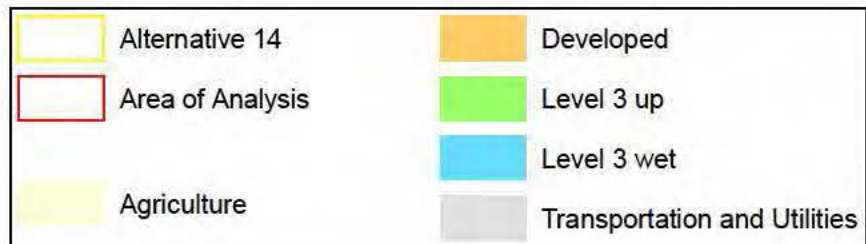
Drawn Dec. 2014

Project Number 5504-005 PDF Document Alt_10_wetlands_1_20141124.pdf



Alternative 14. FLUCFCS Map Showing Habitats Along the Alternative

0 1,000 2,000 4,000 Feet



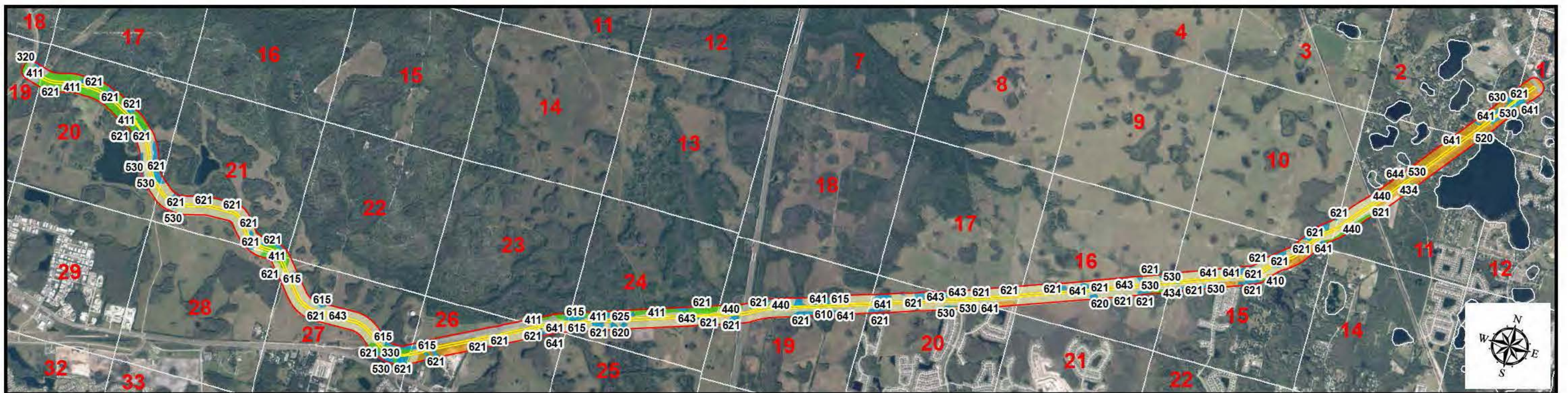
Pasco County Florida



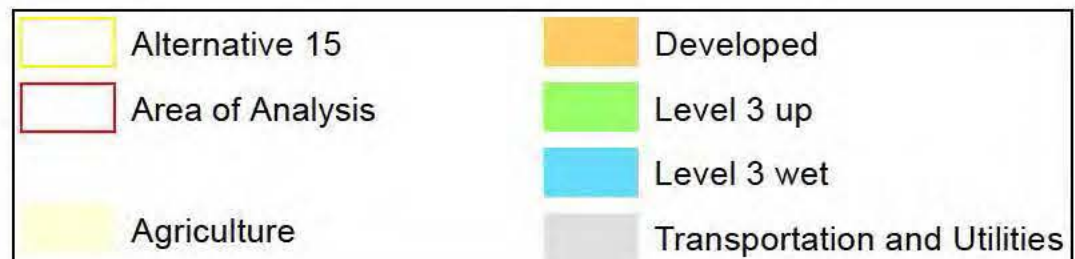
Ridge Road Extension Alternatives Analysis

Drawn Dec. 2014

Project Number 5504-005 PDF Document Alt_10_wetlands_1_20141124.pdf



Alternative 15. FLUCFCS Map Showing Habitats Along the Alternative



0 1,500 3,000 6,000 Feet

Pasco County Florida



**Ridge Road Extension
Alternatives Analysis**

Drawn Dec. 2014

Project Number 5504-005 PDF Document Alt_10_wetlands_1_20141124.pdf



Alternative 16. FLUCFCS Map Showing Habitats Along the Alternative

	Alternative 16		Developed
	Area of Analysis		Level 3 up
	Agriculture		Level 3 wet
			Transportation and Utilities

0 1,500 3,000 6,000 Feet

Pasco County Florida







Ridge Road Extension Alternatives Analysis

Drawn Dec. 2014

Project Number 5504-005 PDF Document Alt_10_wetlands_1_20141124.pdf



Alternative 17. FLUCFCS Map Showing Habitats Along the Alternative

	Alternative 17		Developed
	Area of Analysis		Level 3 up
	Agriculture		Level 3 wet
			Transportation and Utilities

Pasco County Florida



**Ridge Road Extension
Alternatives Analysis**

Drawn Dec. 2014

Project Number 5504-005 PDF Document Alt_10_wetlands_1_20141124.pdf